

Manual Addendum – Version 2.0.4

VectorStar MS4640B Series Microwave Vector Network Analyzers (VNAs)

MS4642B, 10 MHz to 20 GHz, K Connectors

MS4644B, 10 MHz to 40 GHz, K Connectors

MS4645B, 10 MHz to 50 GHz, V Connectors

MS4647B, 10 MHz to 70 GHz, V Connectors



Anritsu

1-1 Addendum to the VectorStar User Interface Reference Manual

This information supplements the VectorStar™ MS4640B Series User Interface Reference Manual.

Introduction

This addendum provides information on User Interface (UI) changes that have been incorporated to the MS4640B Series VNA software in support of the ME7838E Broadband/Banded Millimeter-Wave System.

Option Status

Addition of 110 GHz Broadband/mmWave Option to list of installed options (Option Status).

Option Status		
Option#	Option Description	Option Status
2	Time Domain	Not Installed
7	Receiver Offset	Not Installed
11	V Connector	Installed
12	2.4 mm	Not Installed
13	K Connector	Not Installed
14	3.5 mm	Not Installed
15	N Connector	Not Installed
31	Second Source	Installed
32	RF Combiner	Not Installed
35	Digitizer Board	Not Installed
41	Noise Figure	Not Installed
42	PulseView™ Application	Not Installed
43	True-Mode Stimulus	Not Installed
51	Direct Access Loops	Not Installed
61	Active Measurement Suite with 2 Step Attenuators	Not Installed
62	Active Measurement Suite with 4 Step Attenuators	Not Installed
70	70kHz Low End Frequency Extension	Not Installed
80/81	BB/mmWave[3739 Test Set]	Not Installed
82/83	mmWave[3739 Test Set]	Not Installed
84/85	Dual Source BB/mmWave[3739 Test Set]	Not Installed
86/87/88/89	110 GHz BB/mmWave[3739 Test Set]	Not Installed

Close

Figure 1. Option Status – Addition of 110 GHz BB.mmWave Option

External Module Ctrl

When option 086/087/088/089 is installed, Broadband to 110 GHz selection is added to the External Module Ctrl dialog.

This dialog is accessed within the Multiple Src Setup menu.

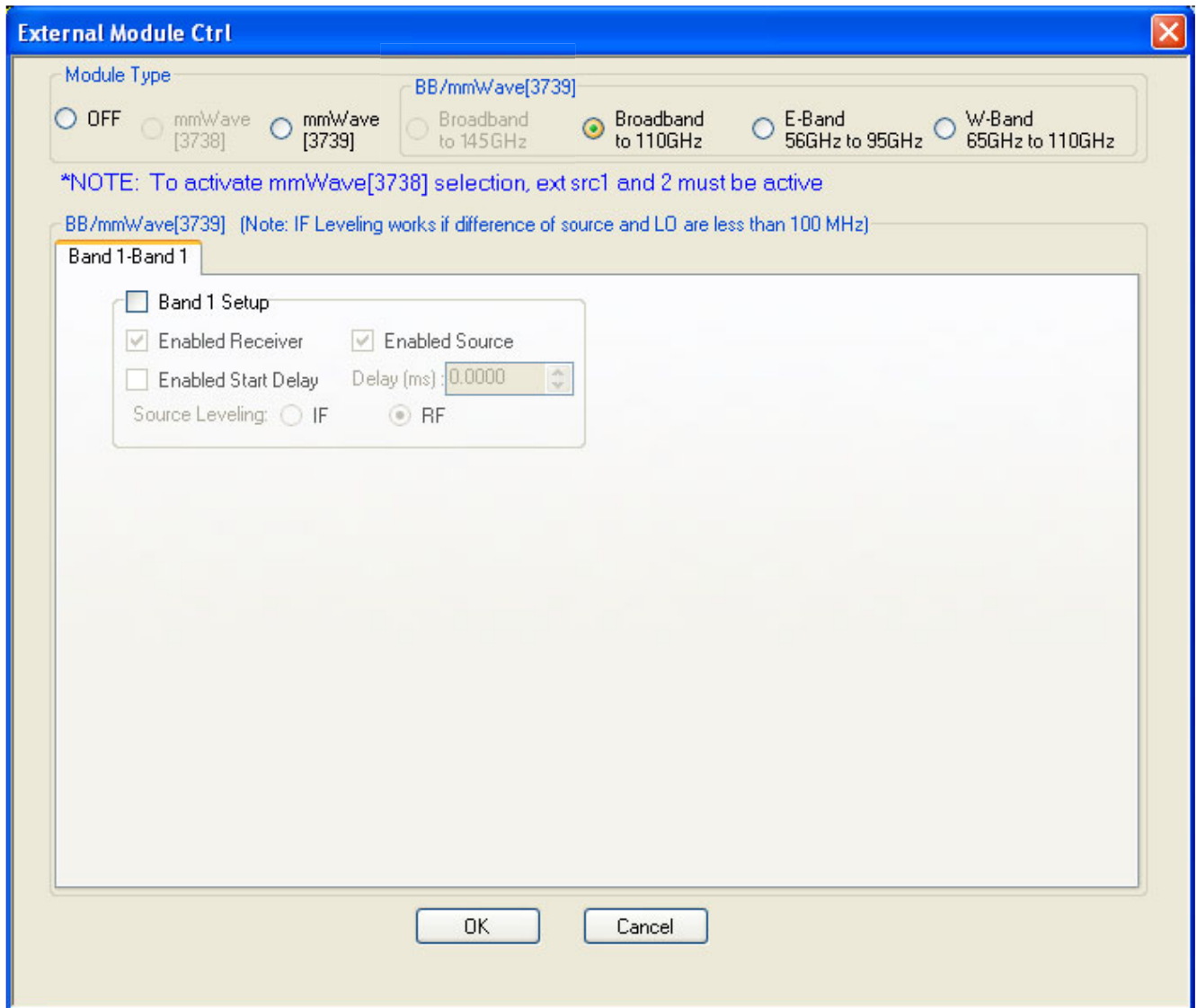


Figure 2. External Module Ctrl Dialog – 110 GHz Selection Added

3739 Setup Menu

When option 086/087/088/089 is installed, Broadband to 110 GHz selection is added to the 3739 Setup menu.



Figure 3. 3739 Setup Menu – 110 GHz Selection Added with Options 086/087/088/089

Anritsu



Anritsu prints on recycled paper with vegetable soybean oil ink.

Anritsu Company
490 Jarvis Drive
Morgan Hill, CA 95037-2809
USA
<http://www.anritsu.com>